

The background is a vibrant jungle scene. At the top left, a monkey hangs from a vine. In the upper right, a colorful parrot is perched on a branch. The bottom of the image shows a savanna landscape with a giraffe on the left, a green turtle in the center, a blue bird on the right, and a lion's head and mane on the far right. The central text is contained within a white rounded rectangle.

**LO: To sort animals according to what they eat.**

Success Criteria

I understand the meaning of carnivore, herbivore and omnivore.

I can identify animals that are in each category.

I can sort animals according to what they eat.

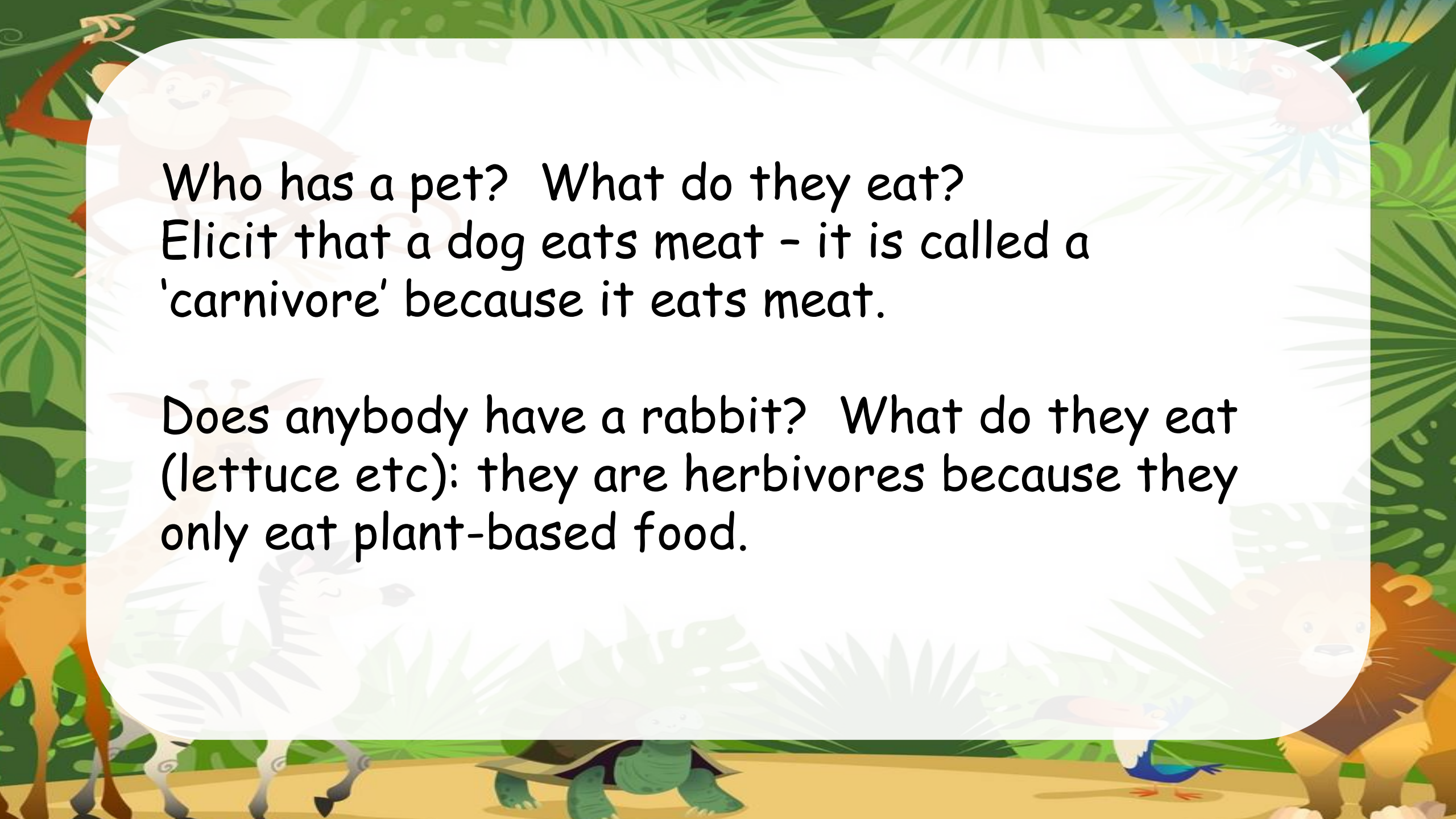
# Recap

Watch bbc clip again.

<https://www.bbc.com/bitesize/clips/zmxqxn timer>

Play 'Who am I? Describe the aquatic animals and pupils guess what animal they are describing.





Who has a pet? What do they eat?  
Elicit that a dog eats meat - it is called a  
'carnivore' because it eats meat.

Does anybody have a rabbit? What do they eat  
(lettuce etc): they are herbivores because they  
only eat plant-based food.



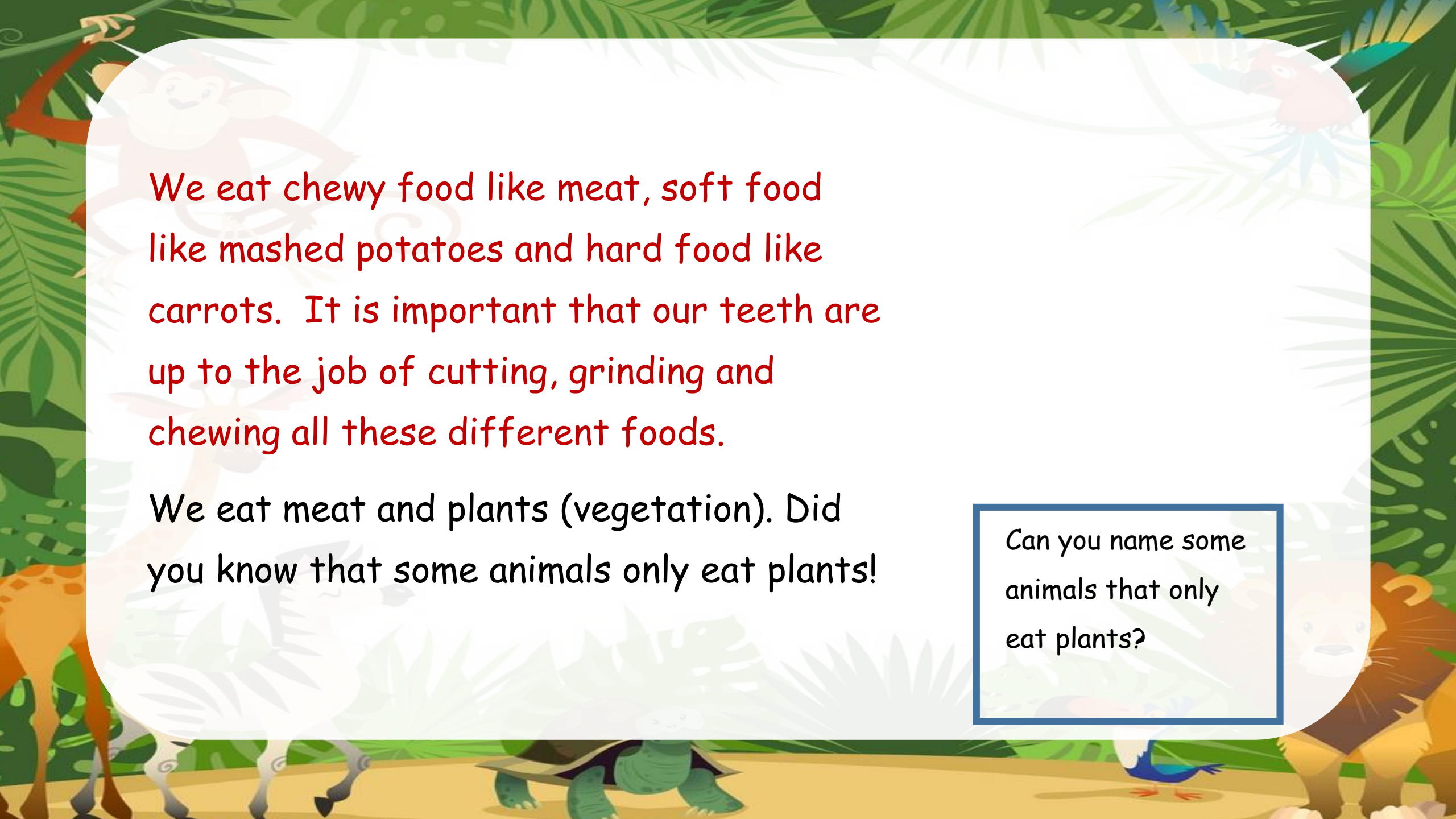
Did you know we could group  
animals depending on what  
they eat?





What do we all use to chew, crush and grind our food?

What sorts of things do we eat?

A vibrant jungle scene with various animals. A monkey hangs from a vine in the top left, a toucan is in the top right, a giraffe is on the left, a lion is on the right, a blue bird is on the ground, and a turtle is in the center foreground. The background is filled with lush green foliage.

We eat chewy food like meat, soft food like mashed potatoes and hard food like carrots. It is important that our teeth are up to the job of cutting, grinding and chewing all these different foods.

We eat meat and plants (vegetation). Did you know that some animals only eat plants!

Can you name some animals that only eat plants?

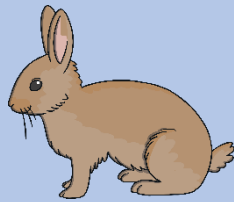


# Staying Alive

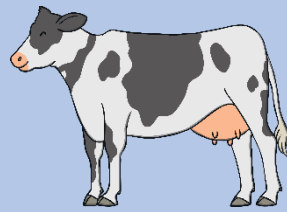
Animals need to eat to stay alive.

Different animals eat different types of food.

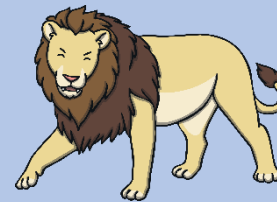
Which of these animals does **not** eat grass?



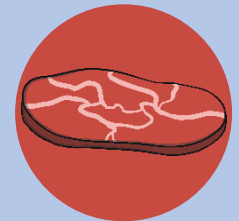
rabbit



cow



lion



# Carnivores

Some animals eat other animals.  
These animals are called **carnivores**.  
Carnivores eat:

mammals



fish



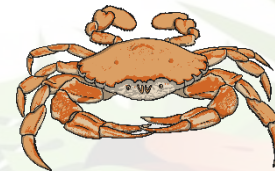
birds



insects



and other animals:





# Carnivores

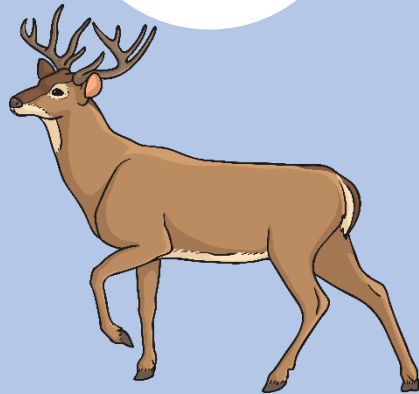
Carnivores can be big or small.

Which of these animals do you think is a **carnivore**?

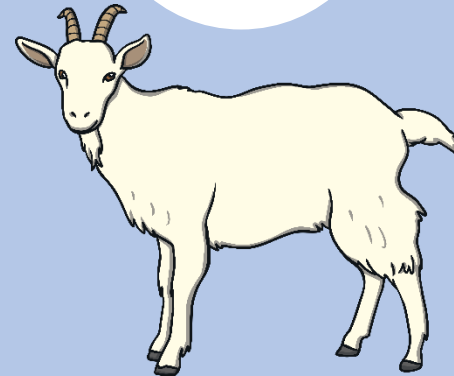
kingfisher



deer



goat



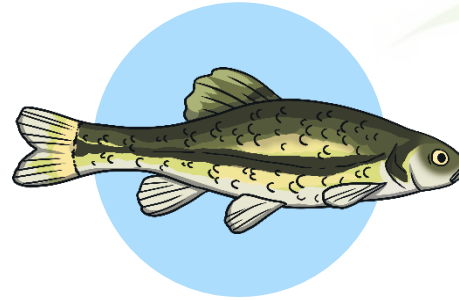
# Carnivores

Kingfishers are small birds.

They only eat other animals.

They are **carnivores**.

They eat small fish and other little animals like tadpoles.





# Herbivores

Some animals eat only plants.  
These animals are called **herbivores**.  
Herbivores eat:

grass



nuts



seeds



flowers



fruit



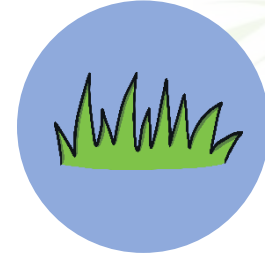
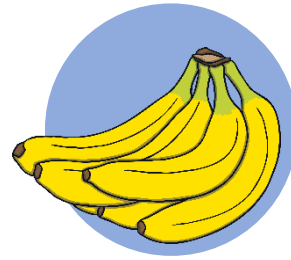
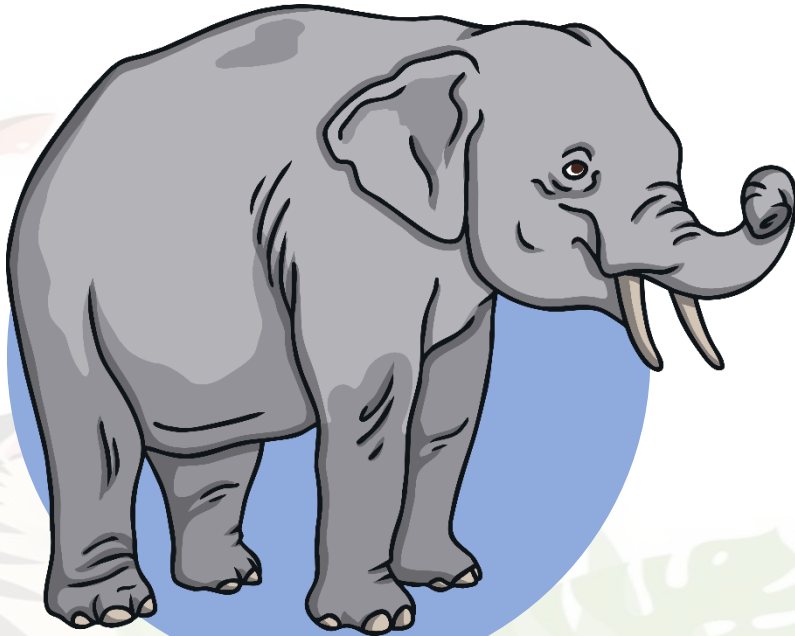
vegetables



# Herbivores

Elephants are **herbivores**.

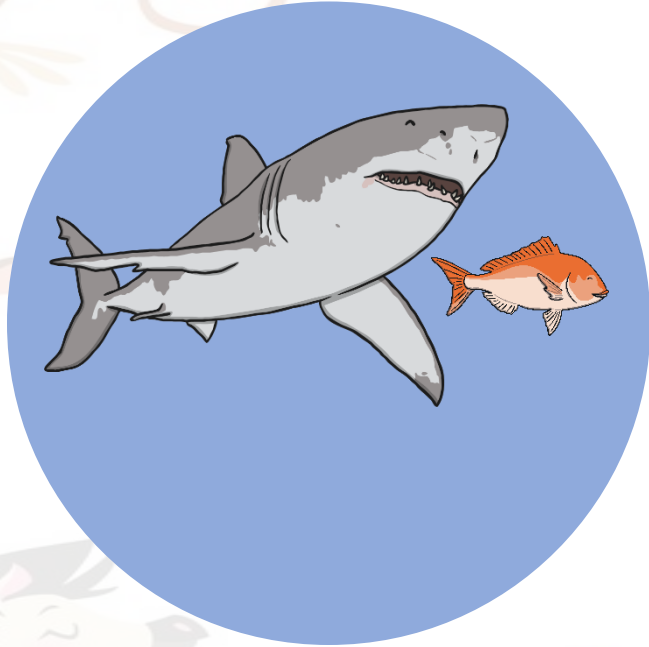
Which of these can they **not** eat?



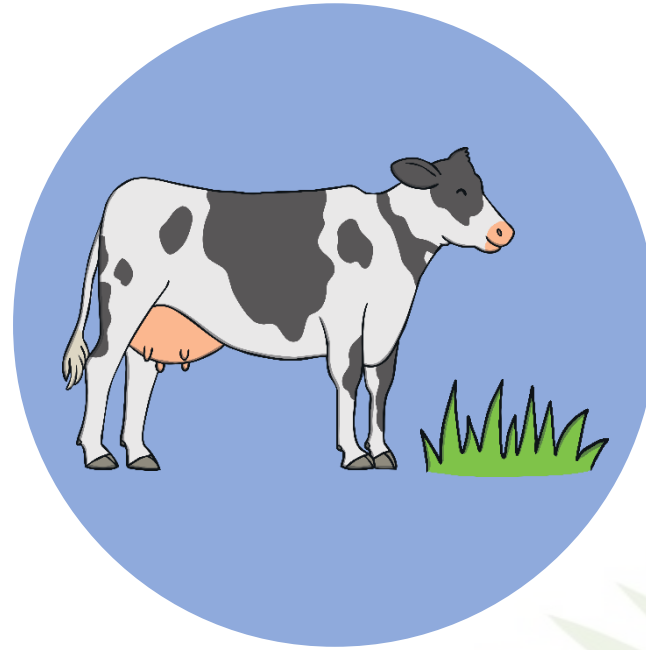


# Omnivores

**Carnivores** eat only animals.



**Herbivores** eat only plants.



But some animals eat animals **and** plants.  
These animals are called **omnivores**.

# Omnivores

**Omnivores** survive by eating both plants and animals. This can be a good way of staying alive. If they cannot find meat, omnivores can eat plants instead.

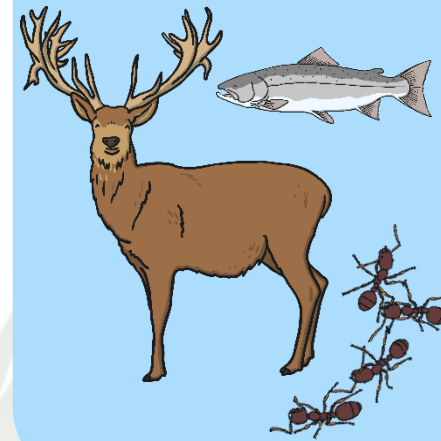
Omnivores come in all shapes and sizes!



Grizzly bears eat seeds, berries and grass.



They also eat deer, fish and insects.

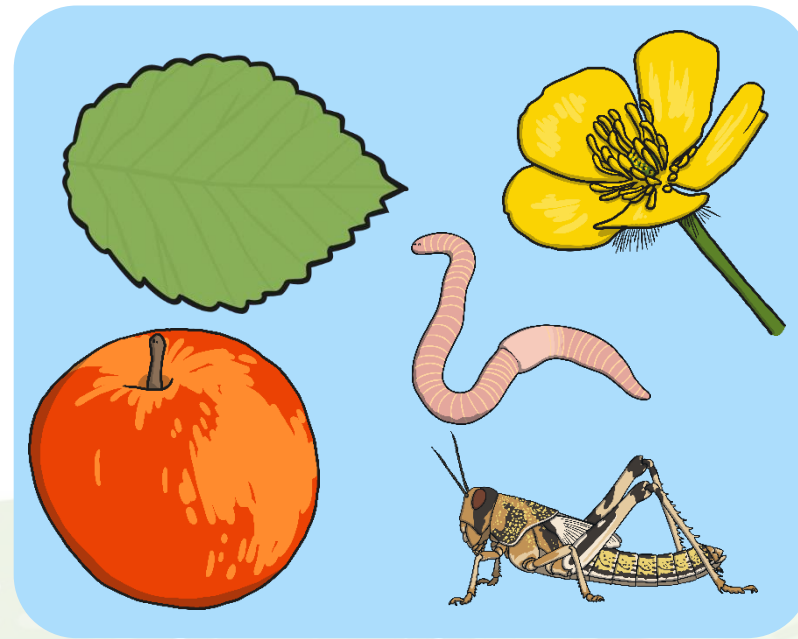
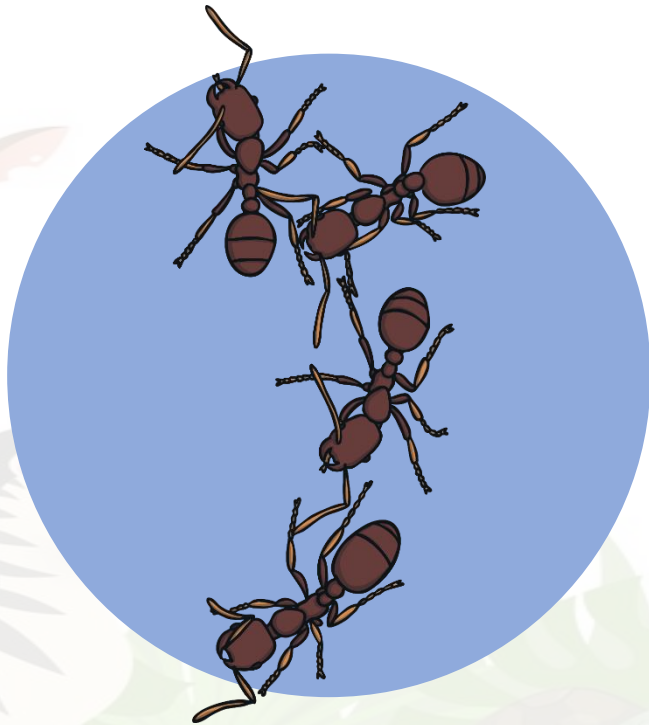




# Omnivores

**Ants** are tiny omnivores.

Most ants eat a mixed diet of plants and meat. This might include leaves, nectar and fruit, as well as insects and dead animals.



# What about Humans?

Do you think humans are carnivores,  
herbivores or omnivores?  
What did you eat yesterday?

Humans are able to eat meat and  
plants.

Some people eat only plants, but  
most humans have both plants and  
meat in their diet.

This makes humans **omnivores**.





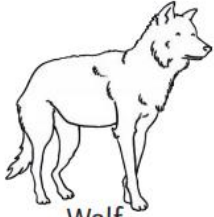


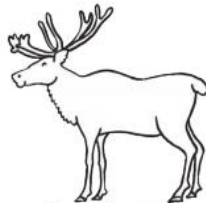


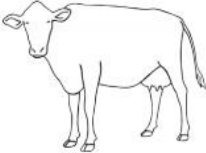

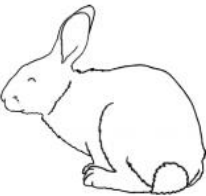

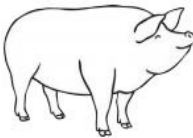
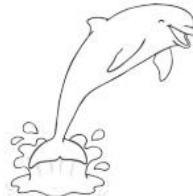

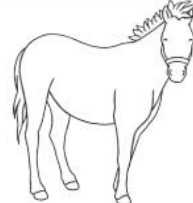

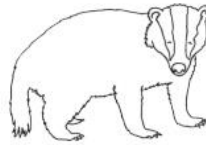
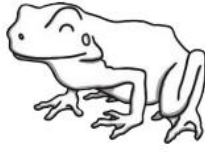
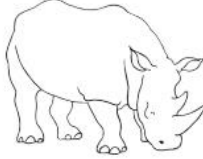
The background of the slide is a vibrant, cartoon-style illustration of a jungle. It features various animals: a monkey hanging from a vine in the top left, a toucan in the top right, a giraffe on the left, a lion on the right, a blue bird on the ground, and a large green tortoise in the center foreground. The scene is filled with lush green foliage and trees.

Watch bbc clip,  
BBC clip on different animal food habits:  
<https://www.bbc.com/bitesize/clips/zwfd2p3>

Discuss and add some animals to each category using pupils ideas. Revise the meaning of the terms carnivore, omnivore and herbivore - pupils can write definitions in books.

# Your Task

Make a table in your book and write the following animals under the correct heading. You can use the internet to research the diet of the different animals.

 Wolf	 Squirrel	 Eagle	 Reindeer	 Giraffe	 Dog
 Cow	 Tiger	 Rabbit	 Polar Bear	 Pig	 Dolphin
 Monkey	 Horse	 Lion	 Badger	 Frog	 Rhinoceros



A vibrant jungle scene with various animals. In the top left, a monkey hangs from a vine. In the top right, a colorful parrot is perched on a branch. In the bottom left, a giraffe is partially visible. In the bottom center, a white zebra is running. In the bottom right, a lion is partially visible. A large, light green turtle is in the bottom center. The background is filled with lush green foliage and trees.

Online game to review categorisation of common animals:

<http://www.sheppardsoftware.com/content/animals/kidscorner/games/animaldietgame.htm>