

Your Task

Using the images below, please support your child to draw hands on the clock to show the given time.

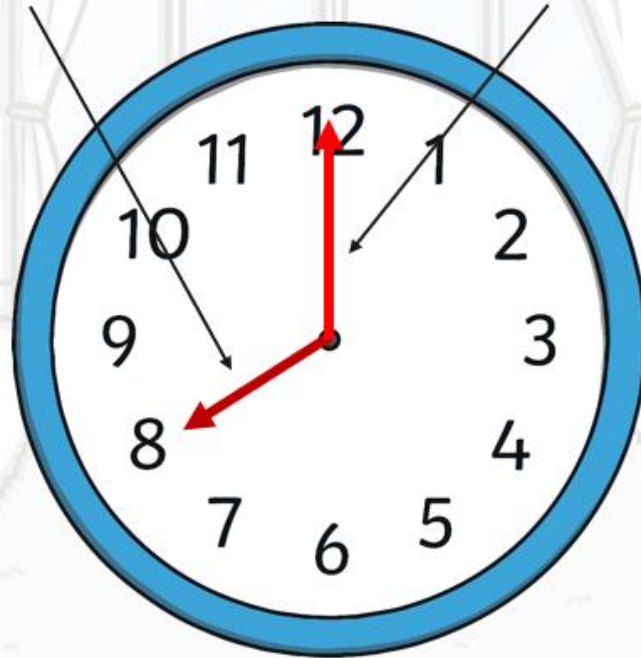
Hours and Minutes

This is the **hour** hand.

This is the **minute** hand.

It is the shortest hand on the clock.

It is longer than the hour hand.



Hours and Minutes

When the minute hand is pointing to 12, it is showing a full hour.
We call this time '**o'clock**'.



On this clock, the hour hand is pointing at the 8 and the minute hand is pointing to the 12.

This clock is showing that the time is **8 o'clock**.

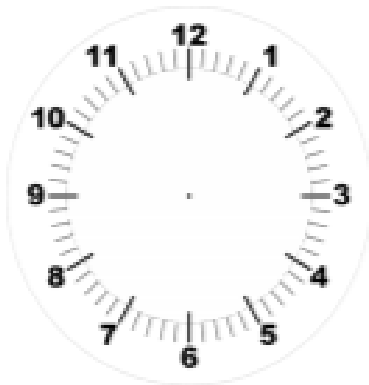


Draw hands on the clock to show the given time.

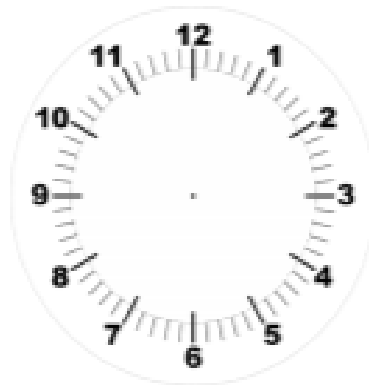
Fluency and precision

Recognise o'clock

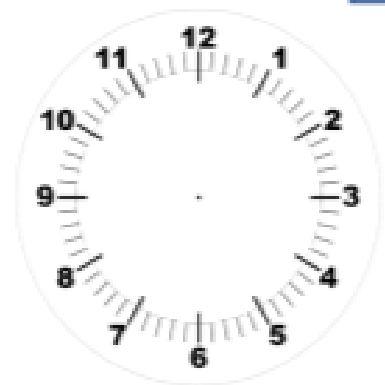
1



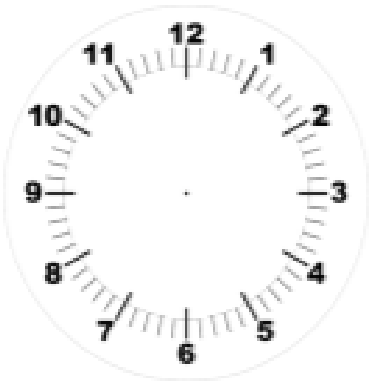
5 o'clock



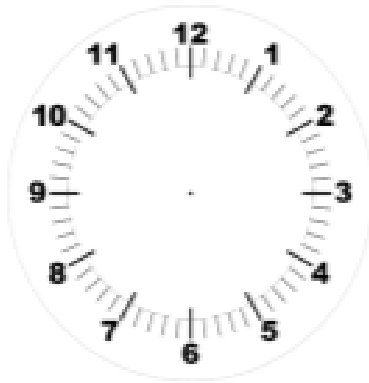
2 o'clock



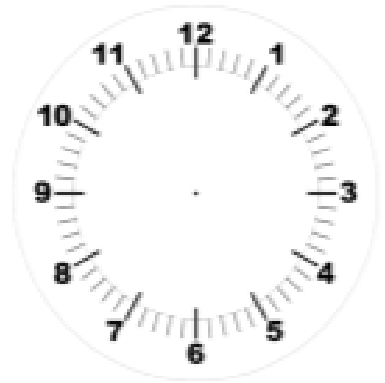
9 o'clock



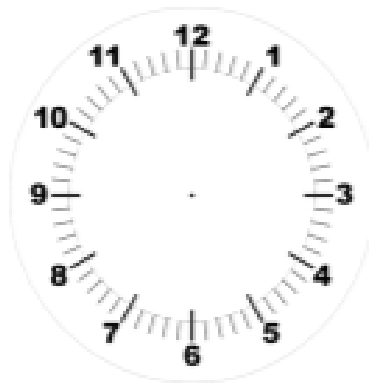
8 o'clock



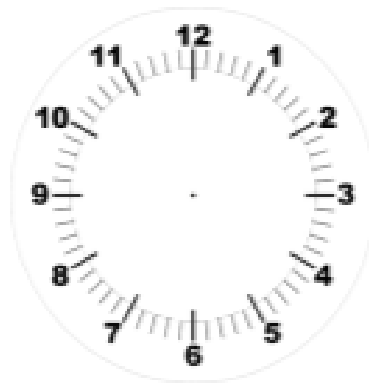
12 o'clock



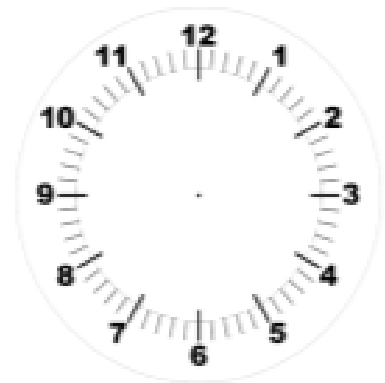
3 o'clock



4 o'clock



1 o'clock



7 o'clock



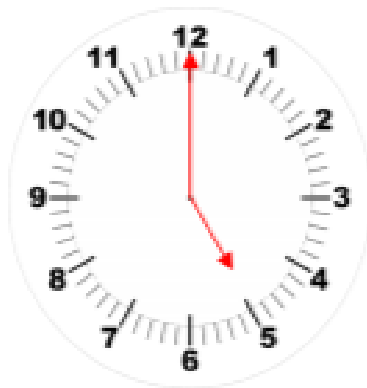
Recognise o'clock

Draw hands on the clock to show the given time.

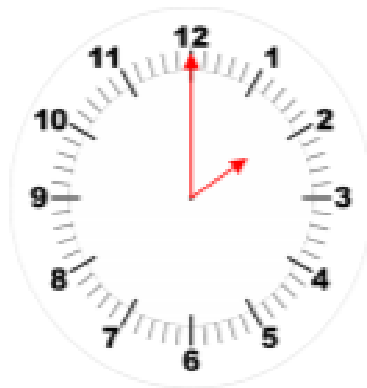
Fluency and precision

Answers

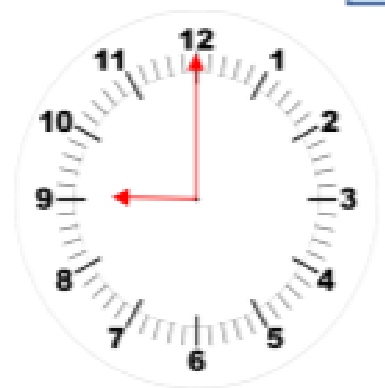
1



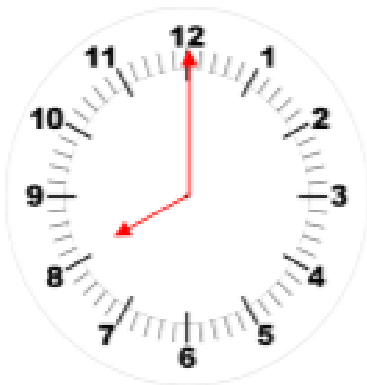
5 o' clock



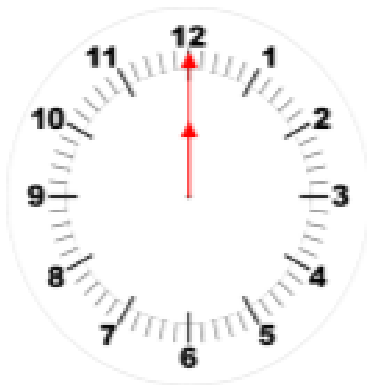
2 o' clock



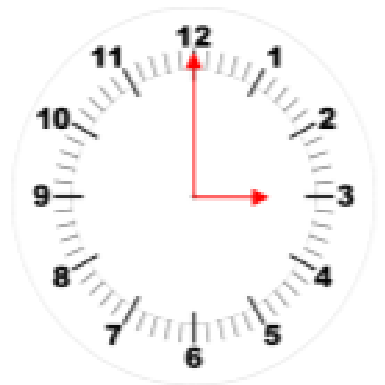
9 o' clock



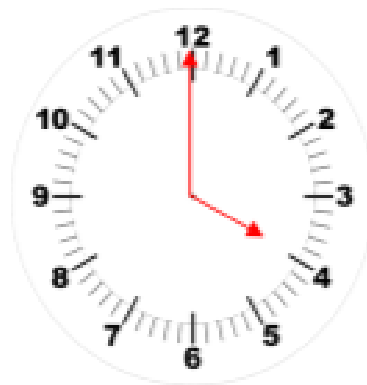
8 o' clock



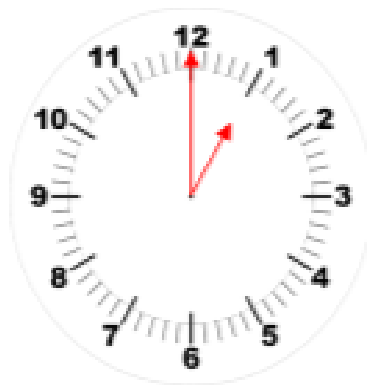
12 o' clock



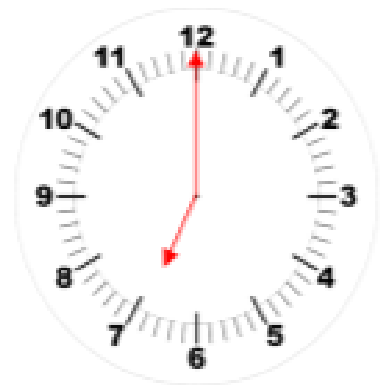
3 o' clock



4 o' clock



1 o' clock



7 o' clock

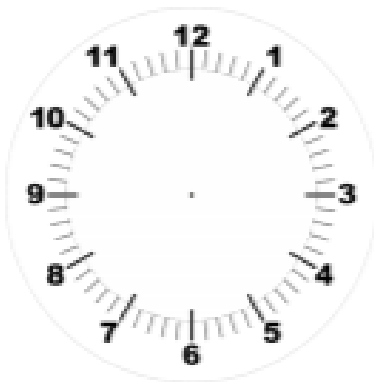


Draw hands on the clock to show the given time.

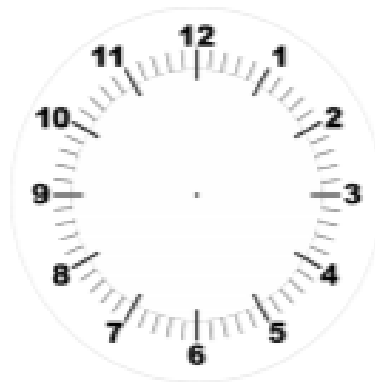
Fluency and precision

Recognise o'clock

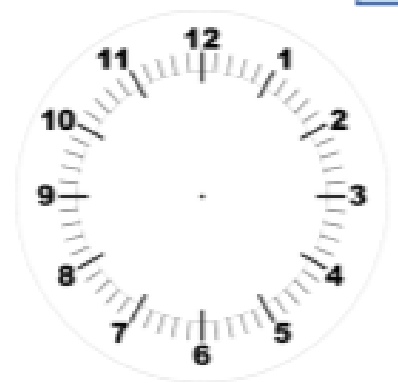
1



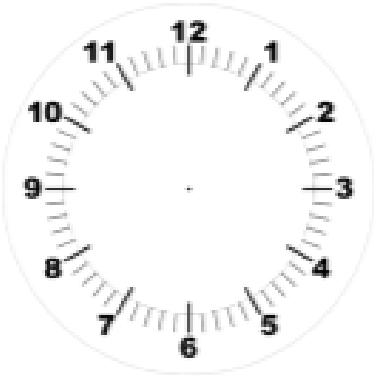
5 o'clock



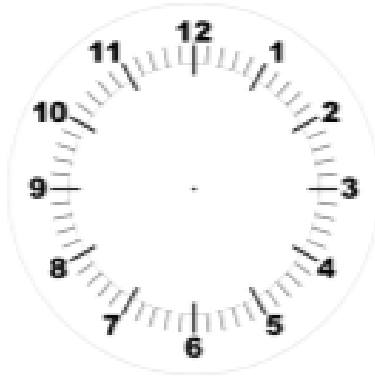
two o'clock



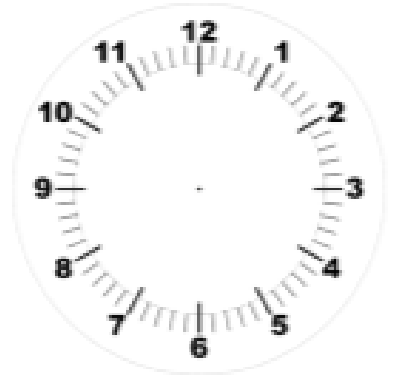
9 o'clock



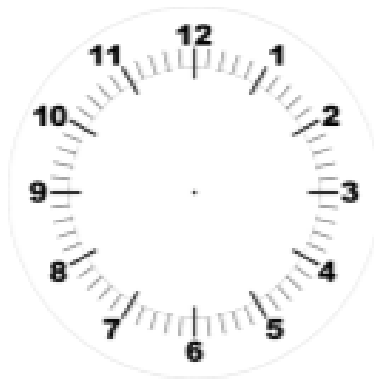
8 o'clock



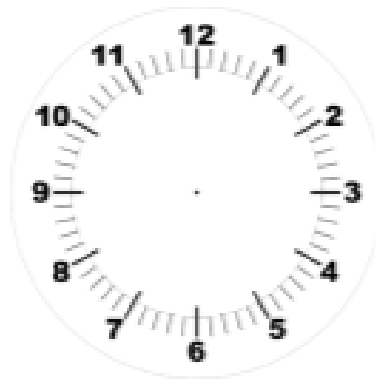
12 o'clock



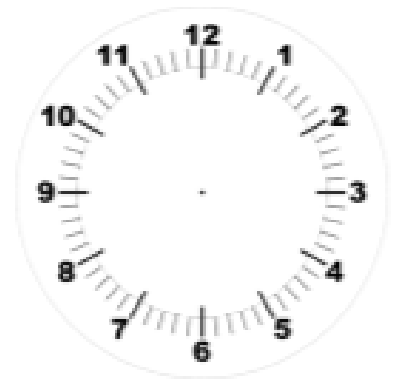
seven o'clock



eleven o'clock



1 o'clock



four o'clock



Recognise o'clock

Draw hands on the clock to show the given time.

Fluency and precision

Answers

1



5 o'clock



two o'clock



9 o'clock



8 o'clock



12 o'clock



seven o'clock



eleven o'clock



1 o'clock



four o'clock



one hour after two o'clock



one hour after nine o'clock



three hours after ten o'clock



one hour before seven o'clock



one hour before twelve o'clock



four hours before six o'clock

Nathan has drawn hands on the clock for 5 o'clock.
Can you explain the mistake he has made?



five o'clock

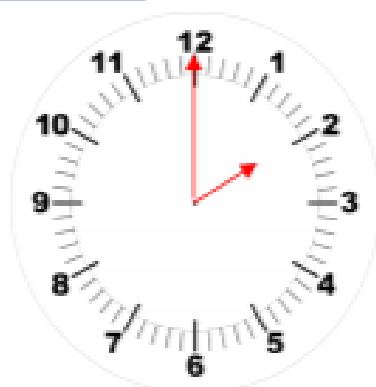


Recognise o'clock

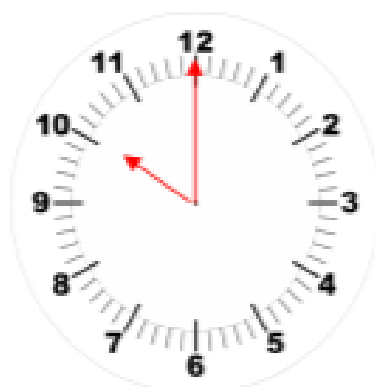
Draw hands on the clock to show the given time.

Fluency and precision

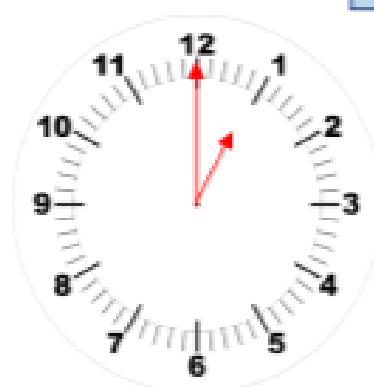
1



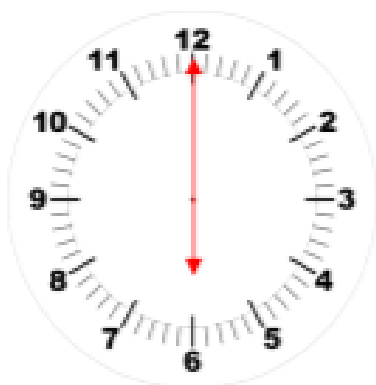
one hour after two o'clock



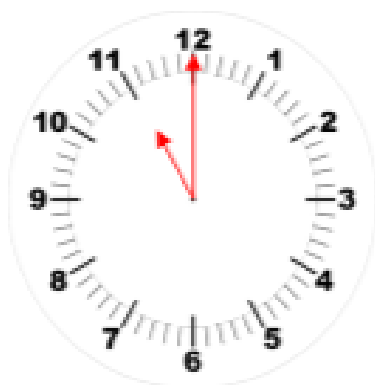
one hour after nine o'clock



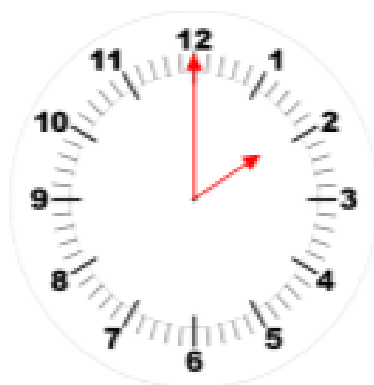
three hours after ten o'clock



one hour before seven o'clock

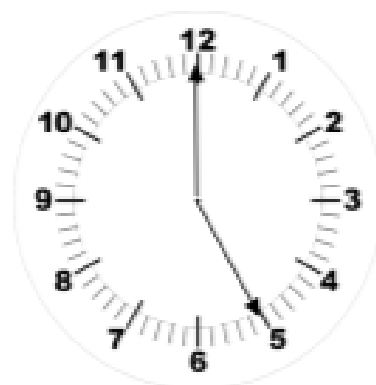


one hour before twelve o'clock



four hours before six o'clock

Nathan has drawn hands on the clock for 5 o'clock.
Can you explain the mistake he has made?



five o'clock

He has drawn two minute hands. His hour hand should be shorter.