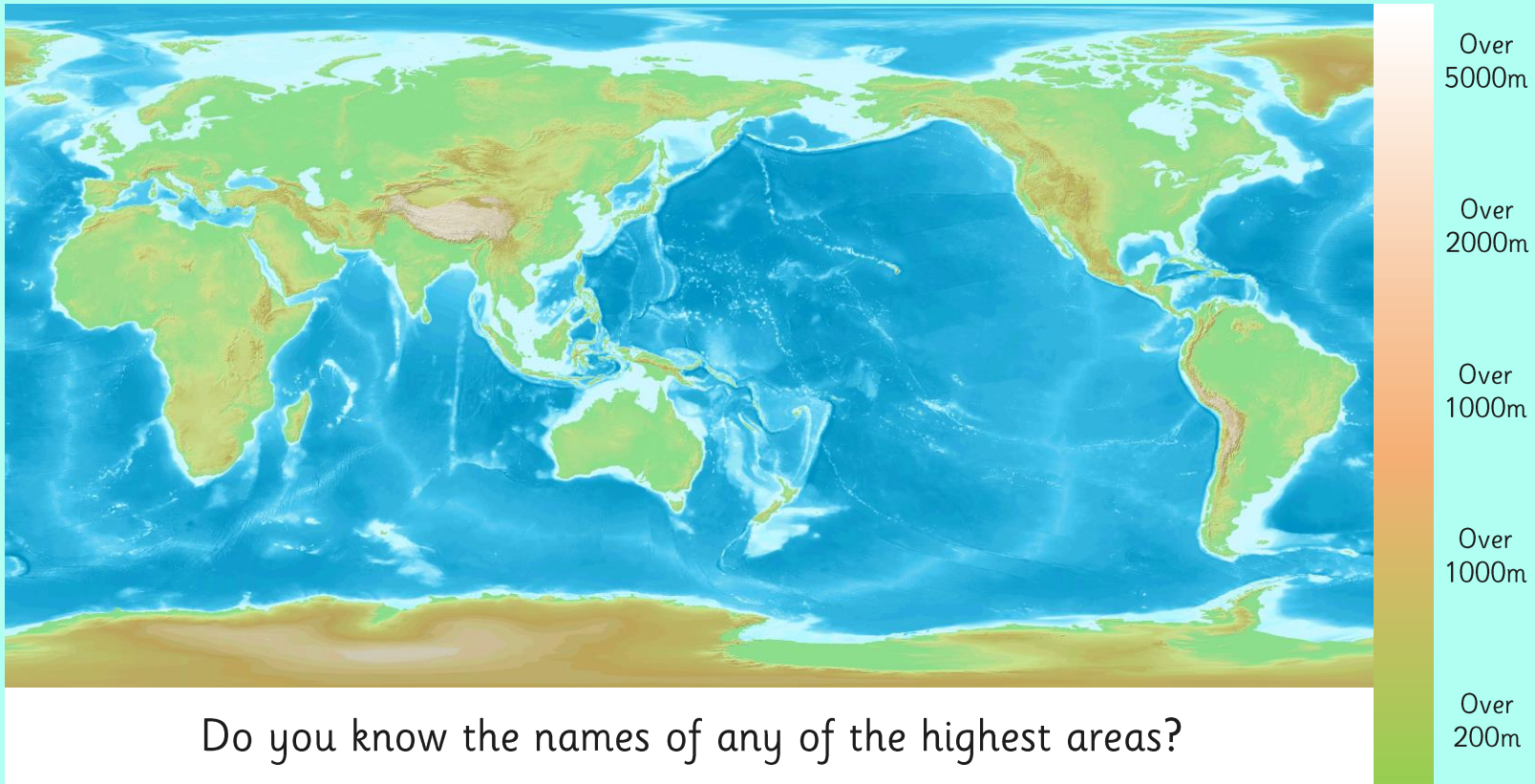


Mountain Ranges



Using the Legend



Do you know the names of any of the highest areas?

What Is a Mountain?



How would you explain to someone what a mountain is?

When does a hill become a mountain?

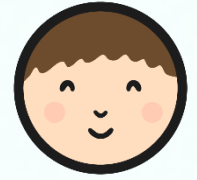
A mountain is usually defined as a part of the landscape with steep slopes that rise over 300m.

Some geographers define a mountain as a summit of at least 600m high.

Some mountains are found in groups called ranges, others are isolated summits.



Locating Mountains



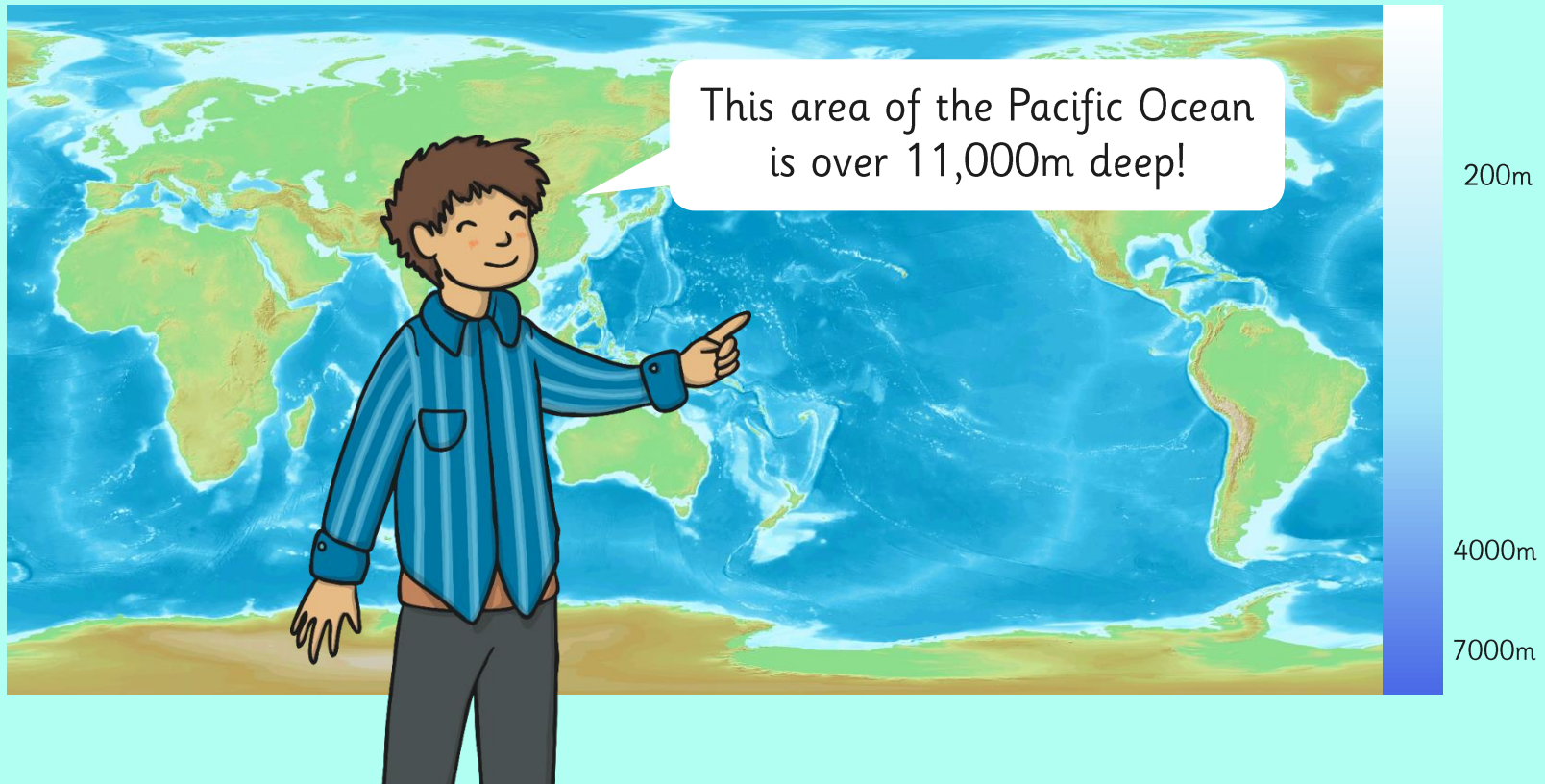
Where do you think the highest mountain in the world is located on this map?

It's here!
Do you know its name?

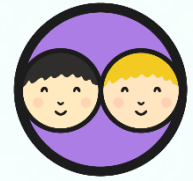


Photo courtesy of Mot the barber and Cessna 206 @flickr.com) - granted under creative commons licence -- attribution

Under the Sea



Mountain Facts



Can you remember how to find a specific location in your atlas?

Look in the index.

Use the page number and coordinates to find the mountain.

Fill in the fact card with more details about the mountain.

A large pyramid shape divided into four horizontal sections. The top section is empty. The second section from the top contains the text "Height:". The third section contains the text "Country:". The bottom section contains the text "Continent:". The bottom-left corner of the pyramid has the small text "twinkl.co.uk".

Height:

Country:

Continent:

twinkl.co.uk